



# Whiteshaw Barn

Long Causeway, Denholme, Bradford, BD13 4NE

---

A characterful country barn with spa  
retreat and woodland setting



Charnock Bates

The Country, Period & Fine Home Specialist









# Whiteshaw Barn

Long Causeway  
Denholme  
Bradford  
BD13 4NE

Offers over: £850,000

## At a glance

- Stone-built barn conversion with character features
- Five double bedrooms, with four being ensuite
- Soaring ceilings, exposed beams, flagstone floors
- Three reception rooms plus mezzanine sitting area
- Feature barn windows, circular and arched
- Log burners and multi-fuel stoves for cosy winters
- Detached garage with converted annexe including kitchen and shower room
- Timber gym cabin with hot tub and sauna
- 3.6 acre plot including woodland setting, wood cabin, and decking
- Private, tranquil location with excellent access to Halifax, Bradford and Hebden Bridge

Charnock Bates







A characterful country barn with  
spa retreat and woodland setting



Hidden among the trees on the edge of Denholme,  
Whiteshaw Barn is a beautifully converted stone barn  
offering a luxurious lifestyle immersed in a 3.6 acre plot.

With vaulted ceilings, grand arched windows, and woodland surroundings,  
this five-bedroom home blends rustic warmth with spa-like indulgence –  
including a mezzanine Jacuzzi bath, a cabin with sauna room, and a sunny deck  
for outdoor living.





## Ground floor

Stepping through the solid wooden front door into the entrance vestibule, you're immediately welcomed by soaring ceilings, an arched window, and traditional flagstone flooring. From here, doors lead to a downstairs WC, cloakroom, and on through to the heart of the home: the kitchen.

With flagstone flooring underfoot, the kitchen offers cream cabinetry with marble worksurfaces, downlighting, a Belling oven with induction hob and extractor, an integrated microwave, and an island with breakfast bar – all beautifully framed by two elegant arched windows. There's also a handy utility room.

The lounge is a cosy haven, featuring wooden floorboards and wide barn windows flanking a central cylindrical log burner – perfect for winter evenings watching the snow fall.

The second entrance vestibule, currently a relaxed sitting area, is bathed in natural light from the huge arched barn window and leads to the flagstone-floored sitting room, where a carved wooden mantel and multi-fuel stove create a warm, welcoming space.





















## First floor

A tartan-carpeted staircase and wooden balustrade lead to the first-floor landing, which evokes the charm of a cosy mountain lodge. Vaulted ceilings, exposed beams, and three large windows frame woodland and garden views.

From here, corridors branch off to a variety of bedrooms:

### Principal bedroom suite

A statement room with circular and arched windows, plus a skylight. Behind a curved wall lies a walk-through wardrobe leading to an ensuite with jet shower and twin heated towel rails. A spiral staircase ascends to a private mezzanine with Jacuzzi bath and mood lighting – your own luxury spa at home.

### Bedroom two

With a circular window overlooking the garden, this double bedroom enjoys its own ensuite shower room.

### Bedroom three

A dual-aspect room with stunning views across both garden and fields, and an ensuite with shower.

### Bedroom four (via attic staircase)

Tucked into the eaves with exposed beams and skylights, this charming double room has a closet and tranquil views.

### Bedroom five (via another attic staircase)

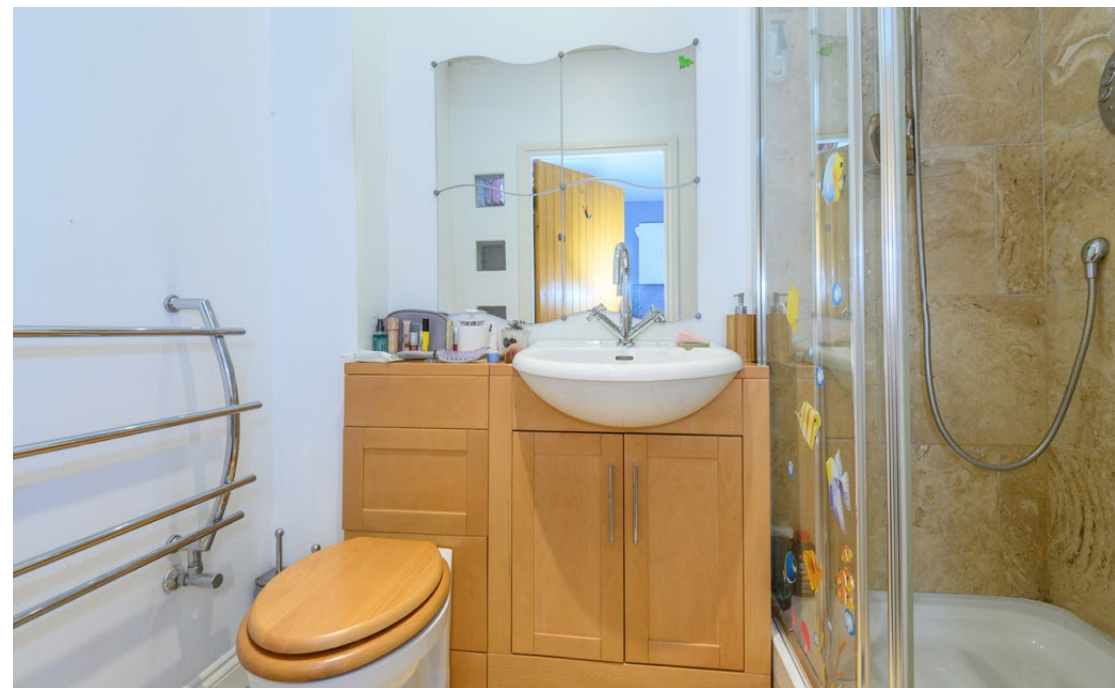
Set beneath rustic beams, this spacious room enjoys two skylights, a storage cupboard, and an ensuite with bath and heated towel rail.



















## Gardens and grounds

Set behind two sets of electric gates (one set accessing the wider site, followed by another set to access this property) and an impressive sweeping driveway leading up to a large flagged courtyard – ideal for evenings around a firepit – Whiteshaw Barn feels like a private retreat set within a 3.6 acre plot.

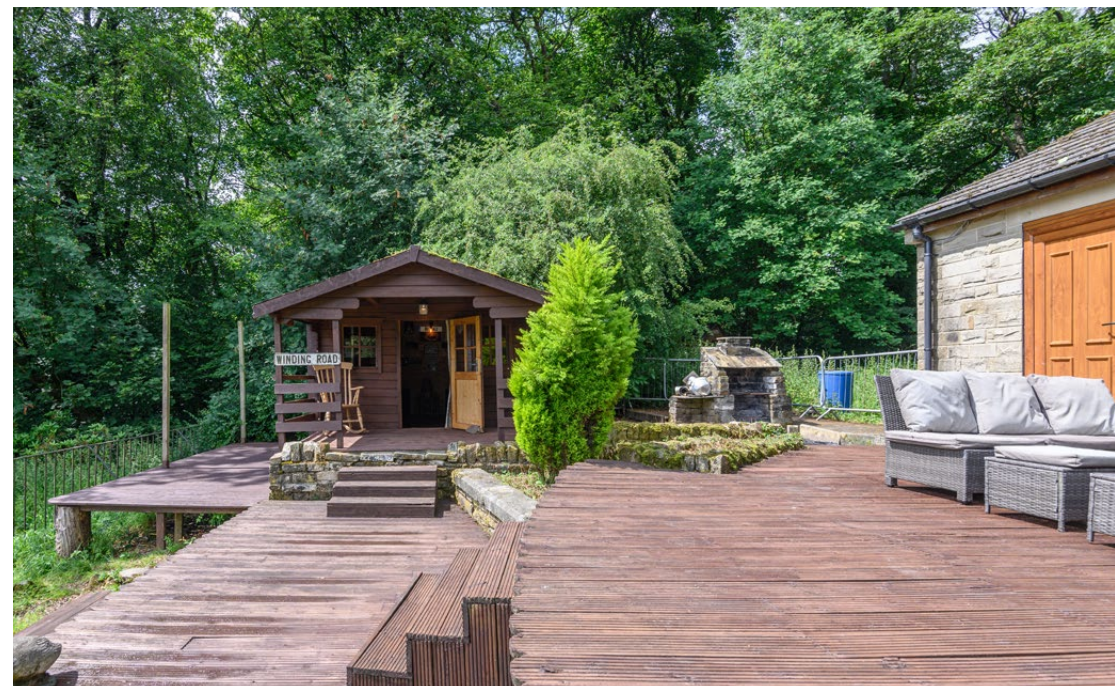
A **detached double garage** includes a partially converted annexe with integrated kitchen (Lamona oven, fridge freezer, extractor) and shower room with WC – ideal as a guest space or home office. Below the lawned area is a hard standing area which can accommodate 10-12 cars.

To the front, a **decked area** spans a gently trickling **stream**, inviting alfresco dining and moments of calm. Nearby, a **timber cabin** fitted with a Kingspan-insulated roof and multi-fuel stove makes a charming reading room or garden hideaway.

Another **wooden cabin** currently serves as a **home gym**, with decking for a **hot tub** and a **sauna** inside – transforming your daily routine into a private wellness experience.

A **shed** and seven external double electric sockets offer practicality, while the surrounding **woodland** offers privacy and tranquility.













## Key information

- Fixtures and fittings:**

Only fixtures and fittings mentioned in the sales particulars are included in the sale.

- Wayleaves, easements and rights of way:**

The sale is subject to all of these rights whether public or private, whether mentioned in these particulars or not.

TENURE	Freehold
CONSTRUCTION	Stone with slate roof
PROPERTY TYPE	Semi-detached
PARKING	Double garage and many additional parking spaces to front elevation of property and on hard standing area
LOCAL AUTHORITY	Bradford MDC
COUNCIL TAX	Band B
ELECTRICITY SUPPLY	Connected to mains
GAS SUPPLY	Butane and propane gas bottles
WATER SUPPLY	Connected to mains
SEWERAGE	Shared septic tank
HEATING	Propane gas central heating (Stuart Hardware), kerosene oil central heating (Craggs Energy), wood burner
BROADBAND	Sky
MOBILE SIGNAL	Good coverage



## Location

Tucked away along Long Causeway on the fringe of Denholme, Whiteshaw Barn offers peaceful seclusion with village amenities nearby. You're perfectly placed for access to Halifax, Bradford, Keighley, and Hebden Bridge, with rolling countryside on your doorstep and a strong sense of community in the area.

Viewing is essential to fully appreciate the unique nature of this property.



Get in touch to arrange your private tour today.

Charnock Bates



Property House  
Lister Lane  
Halifax HX1 5AS  
**01422 380100**

250 Halifax Road  
Ripponden  
HX6 4BG  
**01422 823777**

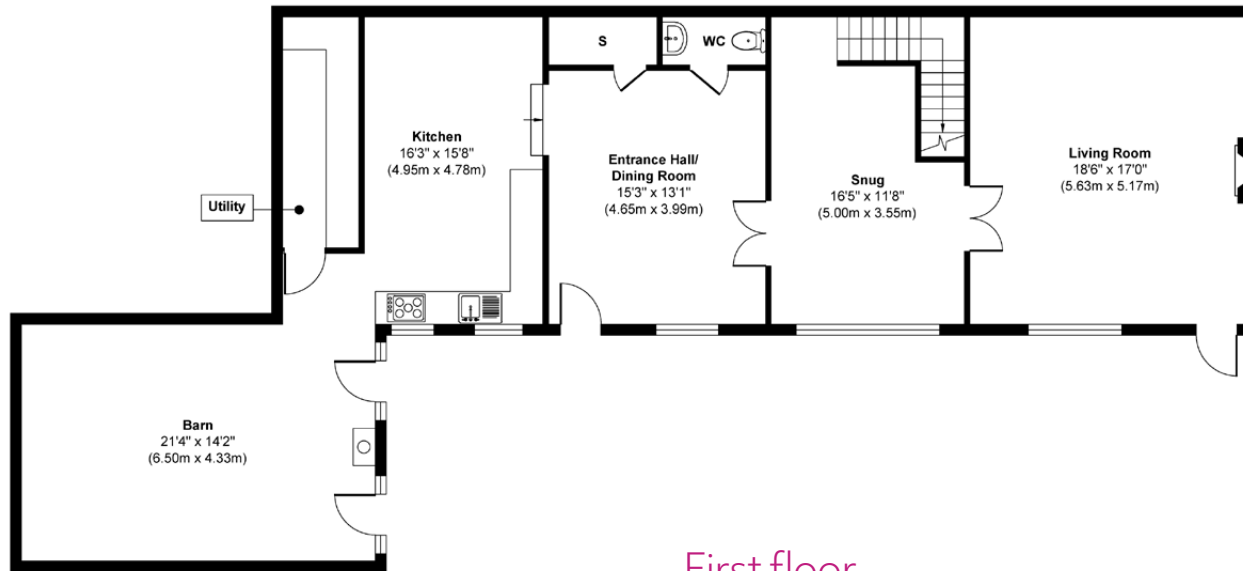
[charnockbates.co.uk](http://charnockbates.co.uk)  
[homes@charnockbates.co.uk](mailto:homes@charnockbates.co.uk)



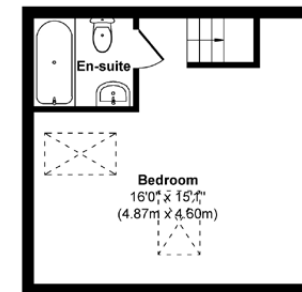
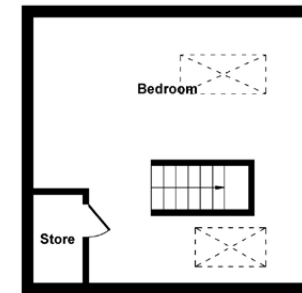


# Floor plans

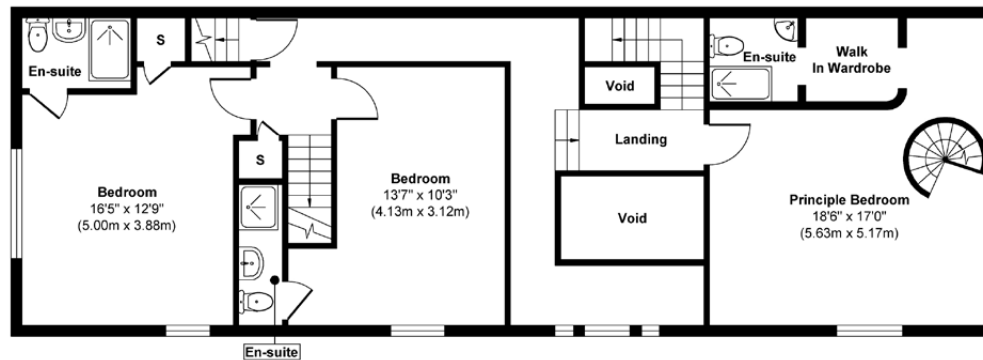
Ground floor



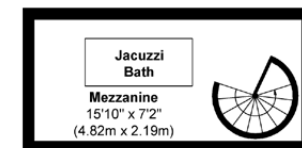
Second Floor



First floor



Mezzanine



Charnock Bates

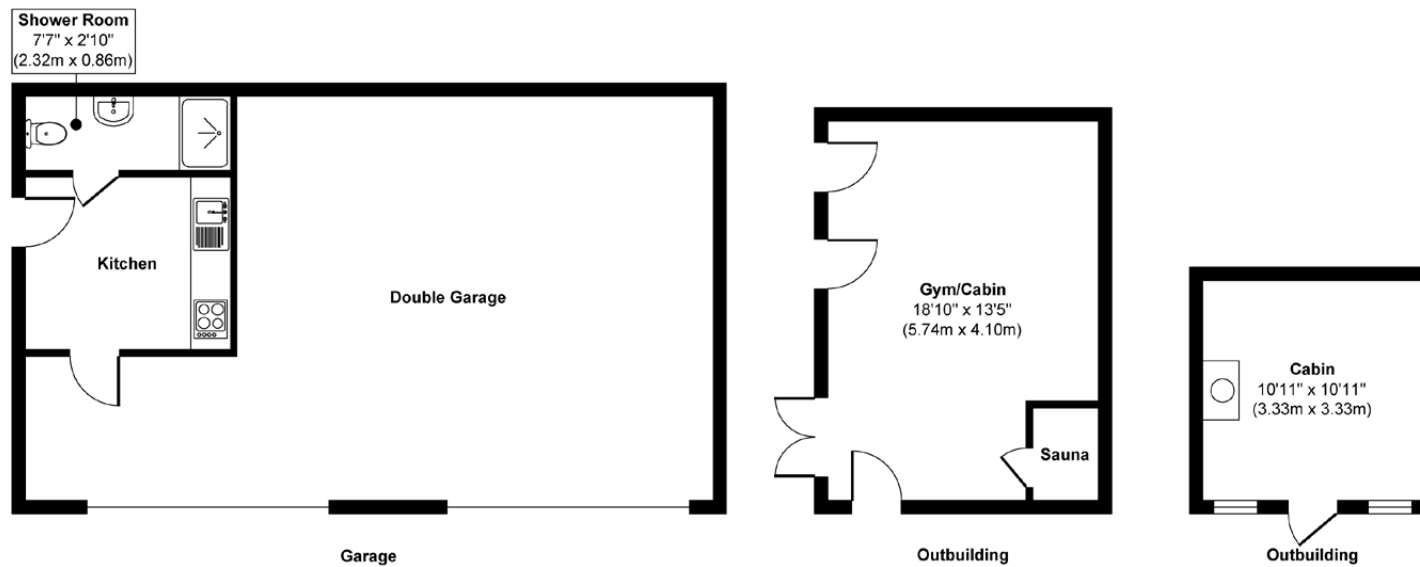


Total approximate floor area:  
**3,195 sqft (296.98m<sup>2</sup>)**  
 (inc Garage and Outbuildings)

Please note: All measurements are approximate and for general guidance only and whilst every attempt has been made to ensure accuracy, they must not be relied on. Internal photographs are reproduced for general information and it must not be inferred that any item shown is included with the property.



# Floor plans



Charnock Bates



Total approximate floor area:  
**3,195 sqft (296.98m<sup>2</sup>)**  
(inc Garage and Outbuildings)

Please note: All measurements are approximate and for general guidance only and whilst every attempt has been made to ensure accuracy, they must not be relied on. Internal photographs are reproduced for general information and it must not be inferred that any item shown is included with the property.





# Charnock Bates

The Country, Period & Fine Home Specialist

Property House  
Lister Lane  
Halifax HX1 5AS  
**01422 380100**

250 Halifax Road  
Ripponden  
HX6 4BG  
**01422 823777**

[charnockbates.co.uk](http://charnockbates.co.uk)

[homes@charnockbates.co.uk](mailto:homes@charnockbates.co.uk)

[rightmove.co.uk](http://rightmove.co.uk)

